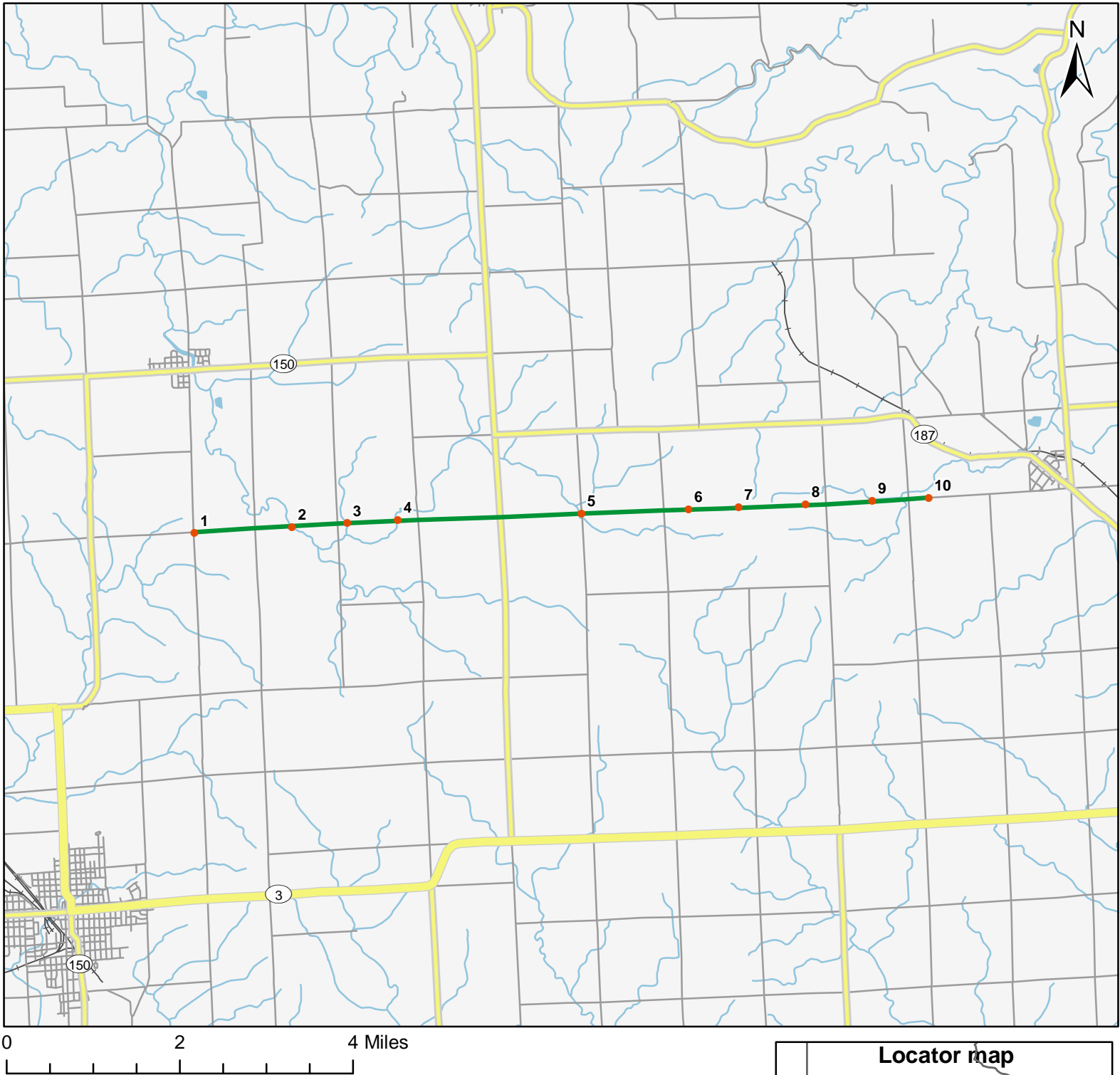


# North American Amphibian Monitoring Program



Route: 360112 Maynard, IA



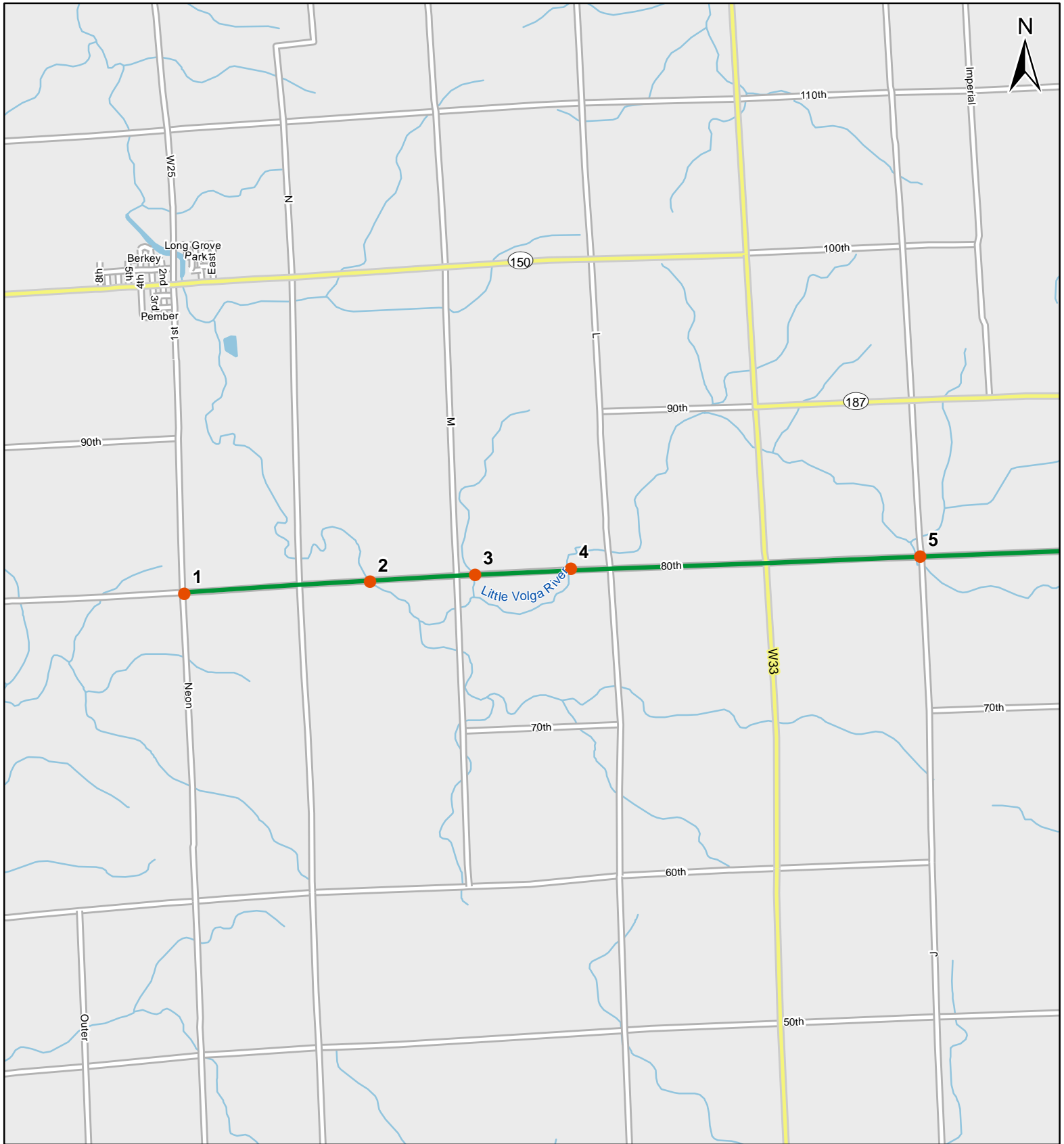
**Legend**

- Stop Locations
- Route Path



For more information, please visit the NAAMP website:  
<http://www.pwrc.usgs.gov/naamp/>

# Route: 360112 Maynard, IA

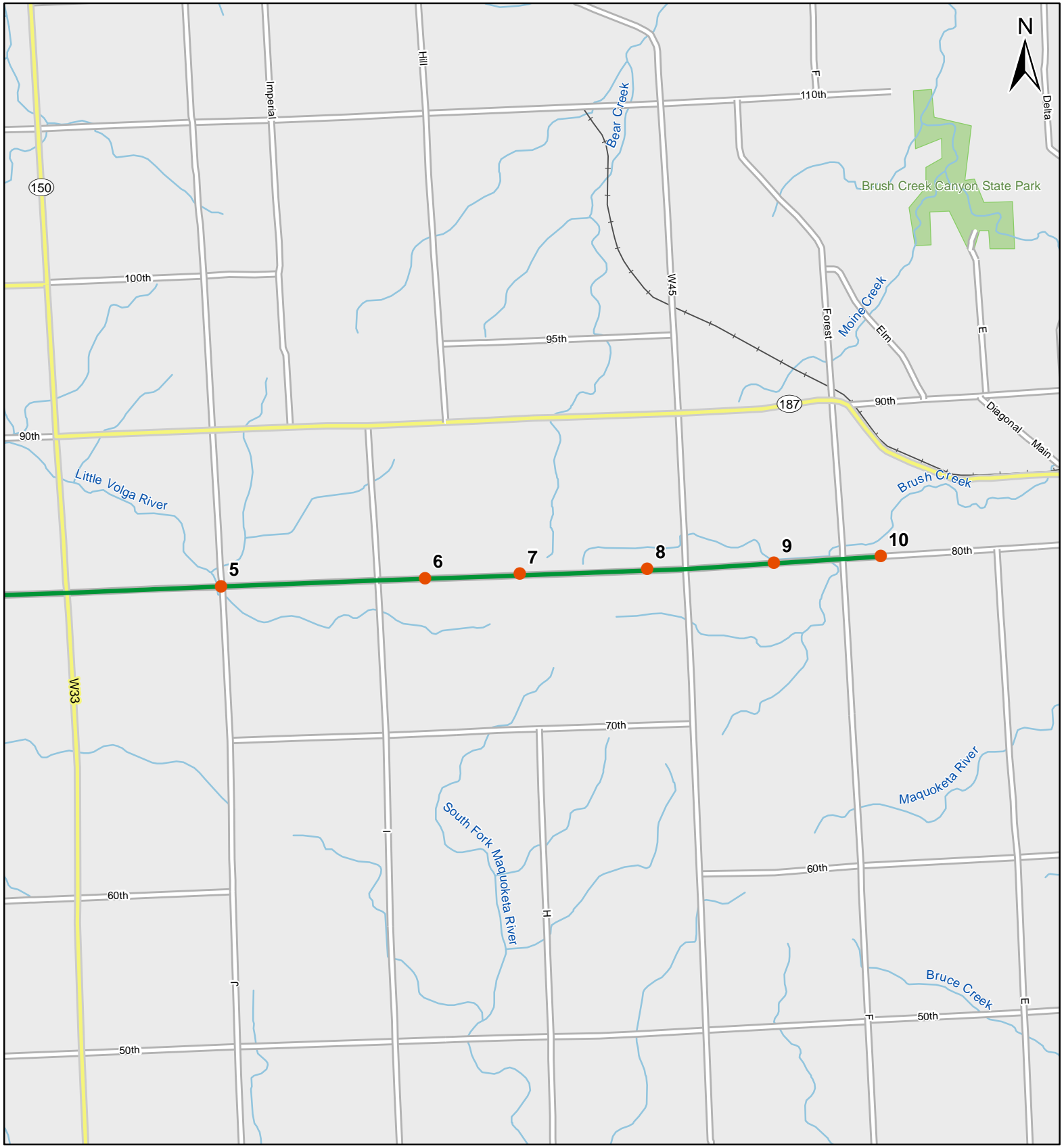


1:50,000

**Legend**

- Stop Locations
- Route Path

# Route: 360112 Maynard, IA



1:50,000

**Legend**

- Stop Locations
- Route Path



# Frog and Toad Call Survey Route Description

Route ID **360112**

Established:

Site Number	Name	County	Latitude	Longitude	Directions
1	0	Fayette	42.7448006	-91.8780975	At neon and 80th - damp ditch.
2	1.2	Fayette	42.7450981	-91.8544998	After N Ave. At bridge, creek buffer.
3	1.8	Fayette	42.7453003	-91.8411026	Culvert and creek after M Ave.
4	2.5	Fayette	42.7453995	-91.8289032	At bridge just before L Ave.
5	4.7	Fayette	42.7449989	-91.7845001	At intersection with J Ave.
6	6.1	Fayette	42.7448006	-91.7585983	After I Ave., damp ditch
7	6.7	Fayette	42.7448006	-91.7464981	Next to farm with 3 siols, damp ditch.
8	7.5	Fayette	42.7447014	-91.7303009	Damp ditch just after house 7407
9	8.3	Fayette	42.7447014	-91.7142029	Ditch pond after G Ave.
10	9	Fayette	42.7448006	-91.7005997	Creek buffer just after F Ave.